



# CleanSol

Cleaning Solutions & Supplies

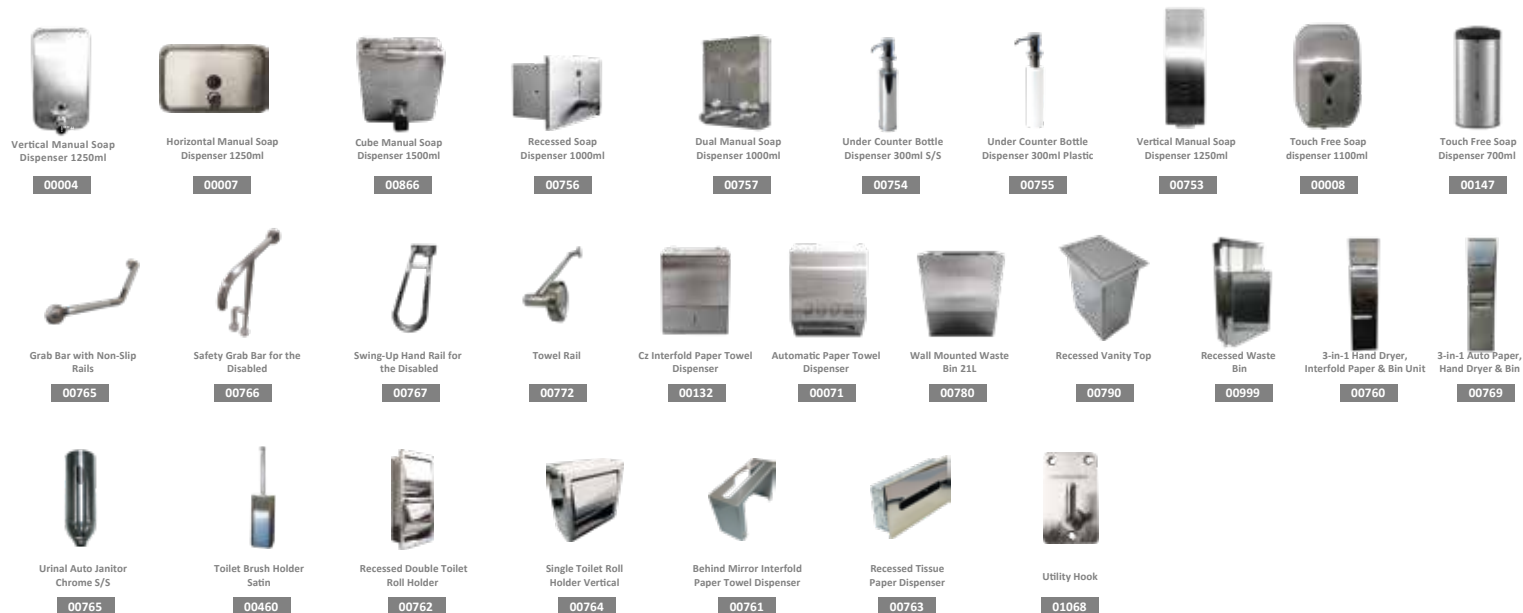


PRODUCT  
CATALOGUE  
**2021**





Solo



# Soap Dispensers

**FLEXi** Manual 500ml  
technology

A compact aesthetically pleasing manual soap dispenser that is packed with 500ml capacity. This durable & robust unit also boasts a unified look and feel to the rest of the range. This unit can be easily converted to a liquid soap, foam soap, hand sanitizing, seat/surface sanitizing, shower gel or lotion dispenser.



Gel    Foam    Spray    Lotion



Code: 00986

White/ABS



Code: 00986-DE



Code: 00986-RG



Code: 00986-DL



Code: 00987



Code: 01035



Code: 01035-DE

## 500ml Consumables

### Sanitisers

#### Everyday Spray



Everyday Spray Sanitiser 500ml

00889



RE-COP Everyday Spray Sanitiser 500ml

00889-C

#### Everyday Gel



Everyday Gel Sanitiser 500ml

00517



RE-COP Everyday Gel Sanitiser 500ml

00517-C

#### 70% Spray



70% Spray Sanitiser 500ml

00902



RE-COP 70% Spray Sanitiser 500ml

00902-C

#### 70% Gel



70% Gel Sanitiser 500ml

00513



RE-COP 70% Gel Sanitiser 500ml

00513-C

#### Food Safe 1828 Spray



Foodsafe Spray Sanitiser 500ml

01131



RE-COP Foodsafe Spray Sanitiser 500ml

01131-C

#### Food Safe 1828 Gel



Foodsafe Gel Sanitiser 500ml

01024



RE-COP Foodsafe Gel Sanitiser 500ml

01024-C

### Foam Soaps

#### Foodsafe 1828 Foam



Anti-microbial Foam Soap 500ml

01022



RE-COP Anti-microbial Foam Soap 500ml

01022-C



Foam Soap 500ml

01016



RE-COP Foam Soap 500ml

01016-C

### Gel Soaps



Pink Soap 500ml

01020



RE-COP Pink Soap 500ml

01020-C



Ivory Soap 500ml

01017



RE-COP Ivory Soap 500ml

01017-C

### Foam Sanitiser

#### Food Safe 1828 Gel



Anti-microbial Gel Soap 500ml

01030



RE-COP Anti-microbial Gel Soap 500ml

01030-C



Foodsafe Foam Sanitiser 500ml

01069



RE-COP Foodsafe Foam Sanitiser 500ml

01069-C

### Shower Gel



Shower Gel Soap 500ml

01026



RE-COP Shower Gel Soap 500ml

01026-C

### Lotion



Hand Lotion 500ml

01028



RE-COP Hand Lotion 500ml

01028-C

### Make it a Top-Up Refillable



Foam



Pump 500ml

00994



Gel



Pump 500ml

00995



Spray



Pump 500ml

00996



Manual Top-Up Bottle 500ml

01097



White/ABS

# Soap Dispensers

**FLEXi** Manual 800ml  
technology

A compact aesthetically pleasing manual soap dispenser that is packed with 800ml capacity. This durable & robust unit also boasts a unified look and feel to the rest of the range. This unit can be easily converted to a liquid soap, foam soap, hand sanitizing, seat/surface sanitizing, shower gel or lotion dispenser.



Gel



Foam



Spray



Lotion

Code: 00984

Black/Eclipse ABS



Code: 00984-DE

Rosegold ABS



Code: 00984-RG

Black/Chrome ABS



Code: 00984-DL

Grey/Satin ABS



Code: 00985

304. S/S



Code: 01034

Black Mild Steel



Code: 01034-DE

## 800ml Consumables



### Sanitisers

#### Everyday Spray



Everyday Spray Sanitiser 800ml  
00890



RE-COP Everyday Spray Sanitiser 800ml  
00890-C



Everyday Gel Sanitiser 800ml  
00518



RE-COP Everyday Gel Sanitiser 800ml  
00518-C

#### Everyday Gel



70% Spray Sanitiser 800ml  
00903



RE-COP 70% Spray Sanitiser 800ml  
00903-C



70% Gel Sanitiser 800ml  
00514



RE-COP 70% Gel Sanitiser 800ml  
00514-C

#### 70% Spray

#### 70% Gel



Foodsafe Spray Sanitiser 800ml  
01015



RE-COP Foodsafe Spray Sanitiser 800ml  
01015-C



Foodsafe Gel Sanitiser 800ml  
01023



RE-COP Foodsafe Gel Sanitiser 800ml  
01023-C

#### Food Safe 1828 Spray

#### Food Safe 1828 Gel



### Foam Soaps

#### Foodsafe 1828 Foam



Anti-microbial Foam Soap 800ml  
01022



RE-COP Anti-microbial Foam Soap 800ml  
01022-C



Foam Soap 800ml  
01013



RE-COP Foam Soap 800ml  
01013-C



### Gel Soaps

#### Anti-microbial



Pink Soap 800ml  
01019



RE-COP Pink Soap 800ml  
01019-C



Ivory Soap 800ml  
01014



RE-COP Ivory Soap 800ml  
01014-C

#### Food Safe 1828 Gel



Anti-microbial Gel Soap 800ml  
01029



RE-COP Anti-microbial Gel Soap 800ml  
01029-C



Foodsafe Foam Sanitiser 800ml  
01070



RE-COP Foodsafe Foam Sanitiser 800ml  
01070-C

#### Foam Sanitiser



### Shower Gel



Shower Gel Soap 800ml  
01025



RE-COP Shower Gel Soap 800ml  
01025-C



### Lotion



Hand Lotion 800ml  
01027



RE-COP Hand Lotion 800ml  
01027-C



### Make it a Top-Up Refillable



Pump 800ml  
00990



Pump 800ml  
00991



Pump 800ml  
00992



Manual Top-Up Bottle 800ml  
01107



White/ABS

# Soap Dispensers

**FLEXI** Automatic 500ml  
technology

A compact aesthetically pleasing auto soap dispenser that is packed with 500ml capacity. This durable & robust unit also boasts a unified look and feel to the rest of the range. This unit can be easily converted to a liquid soap, foam soap, hand sanitizing, seat/surface sanitizing, shower gel or lotion dispenser.



Gel



Foam



Spray



Lotion

Code: 01046

Black/Eclipse ABS



Code: 01046-DE

Rosegold ABS



Code: 01046-RG

Black/Chrome ABS



Code: 01046-DL

Grey/Satin ABS



Code: 01047

304. S/S



Code: 01128

Black Mild Steel



Code: 01128-DE

## 500ml Consumables



### Sanitisers

#### Everyday Spray



Everyday Spray Sanitiser 500ml  
00889



**RE-COP**  
Everyday Spray Sanitiser 500ml  
00889-C



Everyday Gel Sanitiser 500ml  
00517



**RE-COP**  
Everyday Gel Sanitiser 500ml  
00517-C

#### Everyday Gel

#### 70% Spray



70% Spray Sanitiser 500ml  
00902



**RE-COP**  
70% Spray Sanitiser 500ml  
00902-C

#### 70% Gel



70% Gel Sanitiser 500ml  
00513



**RE-COP**  
70% Gel Sanitiser 500ml  
00513-C

#### Food Safe 1828 Spray



Foodsafe Spray Sanitiser 500ml  
01131



**RE-COP**  
Foodsafe Spray Sanitiser 500ml  
01131-C



Foodsafe Gel Sanitiser 500ml  
01024



**RE-COP**  
Foodsafe Gel Sanitiser 500ml  
01024-C

#### Food Safe 1828 Gel



### Foam Soaps

#### Foodsafe 1828 Foam



Anti-microbial Foam Soap 500ml  
01022



**RE-COP**  
Anti-microbial Foam Soap 500ml  
01022-C



Foam Soap 500ml  
01016



**RE-COP**  
Foam Soap 500ml  
01016-C



### Gel Soaps

#### Anti-microbial



Pink Soap 500ml  
01020



**RE-COP**  
Pink Soap 500ml  
01020-C



Ivory Soap 500ml  
01017



**RE-COP**  
Ivory Soap 500ml  
01017-C

#### Food Safe 1828 Gel



Anti-microbial Gel Soap 500ml  
01030



**RE-COP**  
Anti-microbial Gel Soap 500ml  
01030-C



Foodsafe Foam Sanitiser 500ml  
01069



**RE-COP**  
Foodsafe Foam Sanitiser 500ml  
01069-C

### Foam Sanitiser



### Shower Gel



Shower Gel Soap 500ml  
01026



**RE-COP**  
Shower Gel Soap 500ml  
01026-C



### Lotion



Hand Lotion 500ml  
01028



**RE-COP**  
Hand Lotion 500ml  
01028-C



### Make it a Top-Up Refillable



Pump 500ml  
00994



Pump 500ml  
00995



Pump 500ml  
00996



Manual Top-Up Bottle 700ml  
01127



White/ABS



Spray

Code: 00344

# Seat Spray Dispenser

## Manual 500ml

A compact aesthetically pleasing manual toilet seat spray dispenser that boasts 500ml capacity. This durable & robust unit also boasts a unified look and feel to the rest of the range.

### Seat Spray Consumables



Static Spray Pump  
Seat Spray  
Code: 00407



Manual 50ml Static  
Top-Up Bottle  
Code: 00439



Seat Spray  
365ml  
Code: 01049



Seat Spray  
500ml  
Code: 00350



Seat Spray  
Sanitiser 500ml  
Code: 00750

Foodsafe 1828

Everyday Spray

Black/Eclipse ABS



Code: 00344-DE

Rosegold ABS



Code: 00344-RG

Black/Chrome ABS



Code: 000344-DL

Grey/Satin ABS



Code: 00345

304. S/S



Code: 00925

Black Mild Steel



Code: 00925-DE



White/ABS



Spray

Code: 00053

# Auto Inline Dispenser

## 365ml

A compact aesthetically pleasing automatic in-line sanitizing dispenser suitable for urinals as well as toilets. This petite & robust unit also boasts a unified look and feel to the rest of the range.

### Inline Consumables



Auto Sanitiser  
360ml  
Code: 00351



Auto Sanitiser  
360ml  
Code: 00352



x2 AA  
Batteries  
Code: 00457



Installation Kit  
Auto Sanitiser  
Code: 00823



Piping Kit  
Auto Sanitiser  
Code: 00731

Black/Eclipse ABS



Code: 00053-DE

Rosegold ABS



Code: 00053-RG

Black/Chrome ABS



Code: 00053-DL

Grey/Satin ABS



Code: 00346

304. S/S



Code: 01039

Black Mild Steel



Code: 01039-DE



White/ABS

# Airfreshener Dispenser Analogue 250ml

This stylish lockable aerosol fragrance dispenser is constructed from high quality plastic, and is **quick to install and set-up**.

### Airfreshener Consumables



3000Burst  
250ml  
Various



6000 Burst  
250ml  
Various



Airguard 70%  
Alcohol 250ml  
Code: 00556

70%  
ALCOHOL



Air Sanitiser  
3000 Burst  
Code: 00142

0%  
ALCOHOL



Insecticide  
3000 Burst  
Code: 00166



x2 AA  
Batteries  
Code: 00457

Code: 00052

Black/Eclipse ABS



Code: 00052-DE

Rosegold ABS



Code: 00052-RG

Black/Chrome ABS



Code: 00052-DL

Grey/Satin ABS



Code: 00297

304. S/S



Code: 01040

Black Mild Steel



Code: 01040-DE



White/ABS



Harmony Airfreshener  
Dispenser  
Code: 01009



Solo Airfreshener  
Dispenser  
Code: 01010

# Airfreshener Dispenser Analogue 75ml

Interlude fragrances combined with Solo Air Freshener Dispensers delivers a **cost effective, stylish washroom solution**.

### Airfreshener Consumables



3000Burst  
75ml  
Various



Airguard 70%  
Alcohol 75ml  
Code: 00558

70%  
ALCOHOL



Air Sanitiser  
3000 Burst  
Code: 00141

0%  
ALCOHOL



Insecticide  
3000 Burst  
Code: 00166



x2 AA  
Batteries  
Code: 00457



### FRAGRANCE CATEGORIES



Seasons

Fragrance Intensity

Orchard Dew  
Jasmine Rayne  
African Amber  
Rustic Willows



Fruit Fusion

Fragrance Intensity

Berry Blast  
Melon Cocktail



Oceans

Fragrance Intensity

Marine  
Coral



Coffee Shop

Fragrance Intensity

Cafe Bean  
Vanilla Cream



Victus

Fragrance Intensity

Blue Savannah  
Night Shift



Blush

Fragrance Intensity

Devotion  
Amore



Comfort

Fragrance Intensity

Gentle Baby  
Dove

# Takes Pouches Only

**FLEXI** 800ml Compatible  
technology

● Black Mild Steel



800ml Flexi  
Code: 01053-DE

● 304. S/S



800ml Flexi  
Code: 01053

○ Powder coated white



800ml Flexi  
Code: 00433

**AUTOMATIC**

○ White ABS



800ml Flexi  
Code: 00920

**Compatible Consumables**



x6 AA  
Batteries  
Code: 00457

# Takes Pouches Only

500ml Compatible

● 304. S/S



500ml Gel  
Code: 01054

● Black Mild Steel



500ml Gel  
Code: 01054-DE

**500ml Consumables**



Pink Pearl Gel Soap  
500ml  
Code: 00324



Ivory Pearl Gel Soap  
500ml  
Code: 00325



Sanitising Gel  
500ml  
Code: 00322

**Foodsafe 1828**

## TOP-UP OPTIONS



1500ml  
Gel  
Code: 00866



1300ml  
Gel  
Code: 01031



1300ml  
Foam  
Code: 00861



Elbow Dispenser  
500ml Gel  
Code: 00936



Foot Pedal Dispenser  
500ml Gel  
Code: 00199

**UNDER COUNTER**



300ml  
Gel  
Code: 00755



1200ml  
Gel  
Code: 00004



1200ml  
Gel  
Code: 00007



1000ml  
Gel  
Code: 00756



1000ml  
Gel  
Code: 00757



1200ml  
Gel  
Code: 00753

**AUTOMATIC**



700ml  
Gel  
Code: 00147

**Compatible Consumables**



x6 AA  
Batteries  
Code: 00457

**AUTOMATIC**



1100ml  
Gel  
Code: 00008

**Compatible Consumables**



x4 AA  
Batteries  
Code: 00457

## Bulk Consumables

SOAPS



Gel

Ivory Soap 5L  
Code: 00448



Gel

Ivory Soap 25L  
Code: 01038



Gel

Pink Soap 5L  
Code: 00604



Gel

Pink Soap 25L  
Code: 00608



Foam

Foam Soap 5L  
Code: 00405



Foam

Foam Soap 25L  
Code: 00571



Gel

Anti-microbial Gel 5L  
Code: 00446

SOAPS

SANITISERS



Gel

Anti-micro Gel 5L  
Code: 00572



Foam

Anti-micro Foam 5L  
Code: 0451



Foam

Anti-micro Foam 25L  
Code: 00605



Gel

Everyday Gel Sani 5L  
Code: 00519



Gel

Everyday Gel Sani 25L  
Code: 00524



Spray

Everyday Spray Sani 5L  
Code: 00525



Spray

Everyday Spray Sani 25L  
Code: 00526

SANITISERS



Spray

70% Spray Sani 5L  
Code: 00904



Spray

70% Spray Sani 25L  
Code: 00618



Gel

70% Spray Sani 5L  
Code: 00515



Gel

70% Spray Sani 25L  
Code: 00516



Foam

Food Safe Foam Sani 5L  
Code: 01088



Foam

Food Safe Foam Sani 25L  
Code: 00770

SANITISERS



Spray

Food Safe Spray Sani 5L  
Code: 00617



Spray

Food Safe Spray Sani 25L  
Code: 00616



Gel

Food Safe Gel Sani 5L  
Code: 00606



Gel

Food Safe Gel Sani 25L  
Code: 00607

## NON-ALCOHOL SANITISING SOLUTIONS



Infected Fogger Can 150ml  
Code: 00907



Infected Fogger Can 300ml  
Code: 00908



Bulk Fogging Sanitiser 5L  
Code: 00220



Bulk Fogging Sanitiser 25L  
Code: 00330



White/ABS

Code: 01100

Stainless Steel Cover  
20ml  
Code: 00891

# Oxygen-Pro

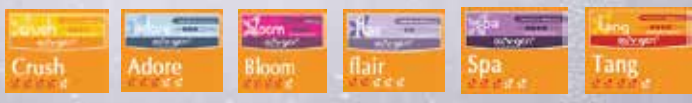
Powered by GLG

Oxy-Gen Powered is the only technology that guarantees the delivery of fragrance in the air continuously, consistently and accurately for the entire duration of the cartridge life.

## Airfreshener Consumables

-  Aerosol Fragrance 20ml Various
-  x2 AA Batteries Code: 00457

## Available Fragrances



# trimat

The **Tri-mat's** innovative triangular design offers its user with a no crease surface that effectively controls splash back in urinals, one of the leading causes of increased bacteria and odours.

## Trimat Consumables

-  Citrus
-  Passion Fruit
-  Herb Mint
-  Mountain Breeze

  
Mountain Breeze  
Code: 00306

  
Hygienic  
Code: 00411

  
Citrus  
Code: 00310

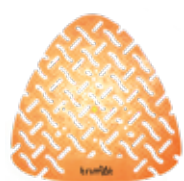
  
Passion Fruit  
Code: 00299

  
Herb Mint  
Code: 00308


# trimat

ECONO

## Trimat Consumables

  
Citrus  
Code: 00559

  
Mint  
Code: 00560

-  Citrus
-  Mint





White/ABS

## Compact Sanitary Bin Manual 20L

Sanitary bins are an essential feature in any washroom or bathroom environment for the hygienic disposal of non-flushable waste material. This robust **pedal operated sanitary** bin is an attractive addition that matches with the rest of the range of products.



Code: 00100

Black/Eclipse ABS



Code: 00100-DE

Grey/Satin ABS



Code: 00395

### Compact Bin Consumables



Deodoriser  
Sani-Pouch  
Code: 00393



Red Sani-Bin  
Liner  
Code: 00413



Deodoriser  
Sani-Powder 5kg  
Code: 00939



White/ABS

## SLIMLINE Sanitary Bin Manual 22L

This robust pedal operated sanitary bin is an attractive addition that matches with the rest of our range of products. **Designed with narrow features** to easily fit between the WC with the lid opening sideways for easy disposal.



Code: 00855

Black/Eclipse ABS



Code: 00855-DE

Grey/Satin ABS



Code: 00856

### Compact Bin Consumables



Deodoriser  
Sani-Pouch  
Code: 00393



Red Sani-Bin  
Liner  
Code: 00413



Deodoriser  
Sani-Powder 5kg  
Code: 00939



White/ABS

## SLIMLINE Sanitary Bin Automatic 22L

This robust automatic sanitary bin is an attractive addition that matches with the rest of our range of products. **Designed with narrow features** to easily fit between the WC with the lid opening sideways for easy disposal.



Code: 00857

Black/Eclipse ABS



Code: 00857-DE

Grey/Satin ABS



Code: 00858

### Compact Bin Consumables



Deodoriser  
Sani-Pouch  
Code: 00393



Red Sani-Bin  
Liner  
Code: 00413



x3 C Cell  
Batteries  
Code: 00458



Deodoriser  
Sani-Powder 5kg  
Code: 00939

# Take a look at more available options you might like:



21 L



Code:00784

Code:00785

Code:00784-DE



36 L



Code:00084

Code:00085

Code:00084-DE

Solo

18 L



Code: 00859



18 L



Code:00083

Code:00086

Code:00083-DE

## Compatible Consumables



Deodoriser Sani-Pouch  
Code: 00393



Red Sani-Bin Liner  
Code: 00413



Deodoriser Sani-Powder 5kg  
Code: 00939



Sani  
**BAG**

## DISPENSERS

An elegant plastic dispenser for dispensing sanitary bags in ladies cubicles. This versatile dispenser can complement other washroom ranges to complete your feminine offering within any washroom environment.

## Sanibag Consumables



Disposable Bag 50's  
Code: 00456



Disposable Bag 50's  
Code: 00868

White ABS



Sanibag Holder White  
Code: 01077

Black ABS



Sanibag Holder Black  
Code: 01077-DE

Chrome ABS



Sanibag Holder Chrome  
Code: 01078

304. S/S



Sanibag Holder Steel  
Code: 00282

Mild Steel



Sanibag Holder Steel  
Code: 00282-DE

# Toilet Roll Holders

## Toilet Roll Consumables



Eden 1Ply Toilet Paper Roll 48pck  
Code: 01059



Eden 2Ply Toilet Paper Roll 48pck  
Code: 01060

These toilet roll holders are more robust option for washroom environments and has the patented **design**. They are mounted to the wall by means of 3 screws with corresponding 5mm wall plugs. They have a lock system with a standard key that allows for opening the lid for easy toilet roll replenishment. Available in **TR2, TR3 & TR5**



# CZ Interfold Paper Dispenser

## Z-Fold

The CZ Interfold paper towel dispenser is a stylish paper solution that is perfect for all bathroom environments. This unit is a neat paper towel dispenser that fits folded paper towels packed on top of one another and fed through the bottom. It dispenses C-folded and Z-folded paper towels.

### CZ-Interfold Consumables



Interfold Folded Z Paper  
1 Ply 10pck  
Code: 00909



00759



00759-DE



00130



00130-DE



00131



00132



00132-DE

# Manual Auto-Cut

This manual roll unit provides automatic mechanical cutting with low pull force and fewer tab-outs. The **no-touch performance provides ultimate hygiene** without batteries. This hygienic hands-free mechanical, compact dispensing system is the ultimate hand drying solution for all bathroom areas. dispenser that fits folded paper towels packed on top of one another and fed through the bottom.



Code: 00125



Code: 00126



Code: 00126-DE



Code: 00125-S



Code: 00125-DE



Code: 01125



Code: 01125-DE



Code: 01126

### Auto-cut Consumables



2 Ply Laminated  
90m 6pck  
Code: 01067



2 Ply Laminated  
125m 6pck  
Code: 01066

# Sensor Auto Paper

This unit is activated by **infrared sensor** for a fully automated touch-free, no mess - no fuss experience. 4x D cell batteries operate up to 80 paper toweling rolls. Activated by IQ sensor with self-adjusting sensing field. This unit consistently dispenses equal paper portions, making it the ideal choice



White/ABS

R 1900.26

Satin/ABS



Code: 00136

Code: 00135

### CZ-Interfold Consumables



2 Ply Laminated 90m 6pck  
Code: 01067



2 Ply Laminated 125m 6pck  
Code: 01066

Black/Eclipse ABS



Code: 00135-DE

304. S/S



Code: 00156

Mild Steel



Code: 00156-DE

White ABS



Code: 00070

304. S/S



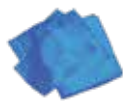
Code: 00071

## Wall Mounted Waste Bins

### Wall Bin Consumables



CLEAR  
Sani-Bin Liner  
100pck  
Code: 00845



BLUE  
Sani-Bin Liner  
100pck  
Code: 00938



YELLOW  
Sani-Bin Liner  
100pck  
Code: 00937



GREEN  
Sani-Bin Liner  
100pck  
Code: 00877



BLACK  
Sani-Bin Liner  
100pck  
Code: 00844

**Waste bins are an essential feature** in any wash-room or bathroom environments for hygienic disposal of non-flushable waste material. Our range of waste bins are an attractive and stylish addition to your bathroom or washroom area.

### 21 L

White/ ABS



Code: 00129

Black/ ABS



Code: 00129-DE

Satin/ ABS



Code: 00133

### 21 L

Black/Eclipse



Code: 00780-DE

Stainless Steel



Code: 00780

### 21 L

Black/Eclipse  
WITH LID



Code: 00745-DE

Stainless Steel  
WITH LID



Code: 00745

### 18 L

Black/Eclipse



Code: 01041-DE

304. S/S



Code: 01041

● Black/Eclipse

**36 L**



Code: 00094-DE

● Stainless Steel



Code: 00094

○ White



Code: 00096

● Black/Eclipse

**18 L**



Code: 00093-DE

● Stainless Steel



Code: 00093

○ White



Code: 00095



White/ABS

Code: 00905

## Deca Roll Dispenser

These **Toilet Roll Holders** are a more robust option for washroom environments. They are mounted to the wall by means of 3 screws with corresponding 5mm wall plugs. It has a lock system with a standard key that allows for opening the lid for easy roll replenishment. for moderate to high traffic

Deca Roll Consumables



Jumbo Roll  
500m 10pck  
Code: 00911

● Black/Eclipse ABS



Code: 00905-DE

● Grey/Satin ABS



Code: 00915

● Black/Chrome ABS



Code: 00905-DL

● Black/Chrome ABS



Code: 00942

# Hand Dryers

Available Warranties



We offer a wide range of washroom handdryers as well as multipurpose solutions for your bathroom. Our household names include: **Xlerator, Vortex, Tempo, EOS, CLX, Tempo Scent & Vibrato.**

temp

Black/Eclipse Stainless Steel



Code: 00933-DE

temp

Stainless Steel



Code: 00933

temp

White



Code: 00933-WH

temp

Black/Eclipse Stainless Steel



Code: 00932-DE

temp

Stainless Steel



Code: 00932

temp

White



Code: 00932-WH

temp SCENT

Stainless Steel



Code: 00933-SC

EOS

Black/Eclipse Stainless Steel



Code: 00145-DE

EOS

Stainless Steel



Code: 00145

EOS

White



Code: 00146

VIBRATO

Black/Eclipse Stainless Steel



Code: 00143-DE

VIBRATO

Stainless Steel



Code: 00143

VIBRATO

White



Code: 00144

VORTEX

Grey/Satin ABS



Code: 00577

CLX

White



Code: 00061

CLX

Stainless Steel



Code: 00059

XLERATOR

Black/Eclipse Stainless Steel



Code: 00068-DE

XLERATOR

Stainless Steel



Code: 00068

XLERATOR

White



Code: 00211

XLERATOR

Chrome S/S



Code: 00067

Grey/Satin ABS



Code: 00579

# Accessories



Urinal Auto Janitor  
Chrome S/S  
Code: 00765



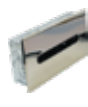
Swing-Up Hand Rail for  
the Disabled  
Code: 00767



Towel Rail  
Code: 00772



Behind Mirror Interfold  
Paper Towel Dispenser  
Code: 00761



Recessed Tissue  
Paper Dispenser  
Code: 00763



Utility Hook  
Code: 01068



Grab Bar with Non-Slip  
Rails  
Code: 00765



Safety Grab Bar for the  
Disabled  
Code: 00766



Toilet Brush Holder  
Black  
Code: 00460-DE



Toilet Brush Holder  
Satin  
Code: 00460